



# MONTHLY MEMBERSHIP PROGRESS REPORT

Results as of: 3/31/2015

Multiple District 35

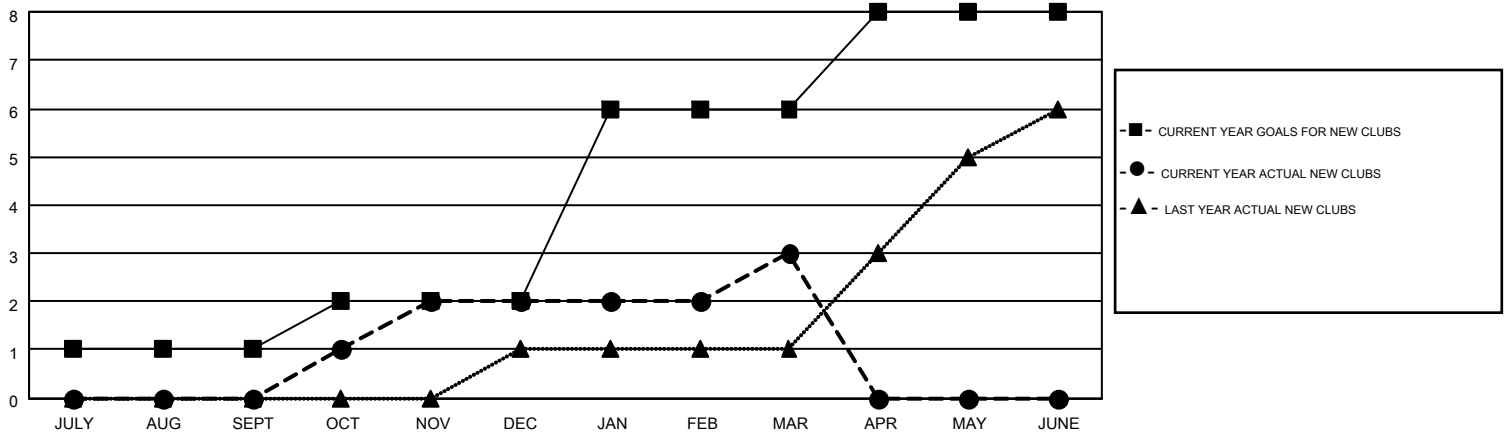
LOCATION: FLORIDA

GMT: CARL HARRELL

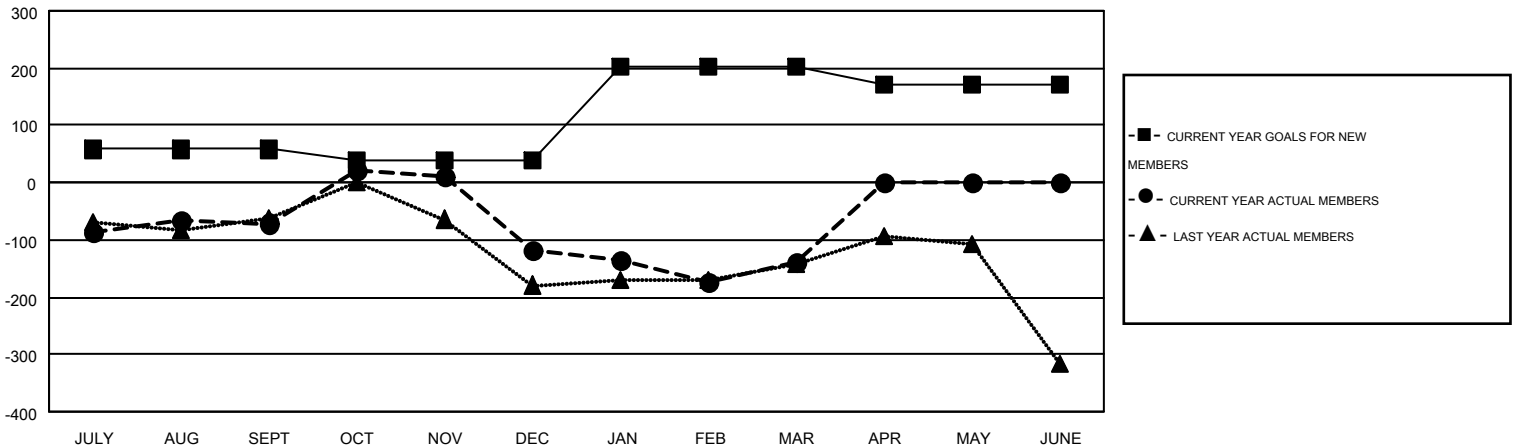
GMT CA 1

Clubs					Members				
RESULTS FOR 2014-2015					RESULTS FOR 2014-2015				
QUARTER	NEW CLUB GOAL	NEW CLUBS	DROPPED CLUBS	NET GAIN/LOSS	QUARTER	NEW MEMBER GOAL	CHARTER AND NEW MEMBERS ADDED	DROPPED MEMBERS	NET GAIN/LOSS
JULY/AUG/SEPT	1	0	3	-3	JULY/AUG/SEPT	58	193	264	-71
OCT/NOV/DEC	1	2	2	0	OCT/NOV/DEC	-20	287	334	-47
JAN/FEB/MAR	4	1	2	-1	JAN/FEB/MAR	164	215	236	-21
APR/MAY/JUNE	2	0	0	0	APR/MAY/JUNE	-30	0	0	0

GOALS AND ACTUAL NEW CLUBS CUMULATIVE



GOALS AND ACTUAL MEMBERS CUMULATIVE



DROPPED CLUBS: 7	172 CLUBS OF 248 ADDED 1 OR MORE NEW MEMBERS	<b>GENDER DISTRIBUTION</b>
		MALE 3,382 (58.53%)
		FEMALE 2,396 (41.47%)
<b>DROPPED MEMBERS</b>	<a href="#">CLICK HERE FOR HEALTH ASSESSMENT DATA</a>	<b>FAMILY UNIT MEMBERS</b> 1,435
DECEASED 70		HEAD OF HOUSEHOLD 690
CLUB CANCELLED 17		NON-HEAD OF HOUSEHOLD 745
OTHER 747		
<b>TOTAL 834</b>		